

Squirrel Hill South

Swisshelm Park

20th-century Modern
Architecture, Public Art & Design
Pittsburgh, Pennsylvania

MODERN SURVEY SERIES
www.pittsburghmoderncommittee.org



PITTSBURGH
MODERN
COMMITTEE
OF
PRESERVATION
PITTSBURGH

Residential Edition



The Landis House, 1947. Architects Peter Berndtson & Cornelia Brierly for Jack Landis

Berndtson, Brierly & Western PA Wrightian



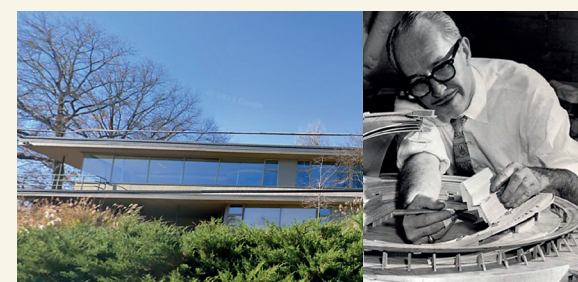
The design couple that met at Frank Lloyd Wright's Taliesin apprenticeship in the 1930s went on to apply the concepts of organic architecture to their own projects throughout greater Pittsburgh, where Cornelia Brierly was from. Of their three residential sites included on this map, notice the harmonious relationship between the structure and surrounding site, the use of building materials in their authentic state, and the horizontal focus created by distinctive overhangs.

Katselas & Dynamic Volumes



Katselas led a prolific Pittsburgh-based career, producing a diverse range of built structures - sculptural volumes of concrete, brick and glass - to be discovered throughout the city. Unassuming from the street, the architect's residential design fashioned from concrete block opens into a series of generous spaces stretching over the hillside. His charming series of 1970s townhomes along Beechwood Boulevard bring to mind his housing complexes with design-centered solutions.

Ritchey & Radiant Light

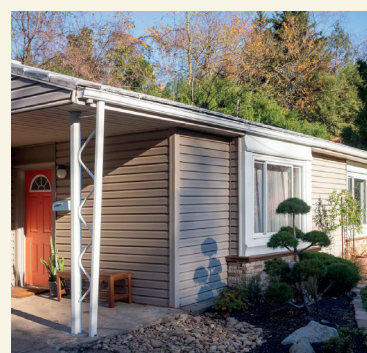


Perhaps best known for his design of the innovative Civic Arena and now-restored Mellon Square with his partner architect James Mitchell, Dahlen K. Ritchey, alumnus of Carnegie Institute of Technology, also completed residential projects of great merit including his own home in Bradford Woods. His design tucked away on Mount Royal Road is a sophisticated low lying expression in glass, offering plenty of privacy for the dweller and not much of a view for the onlooker.

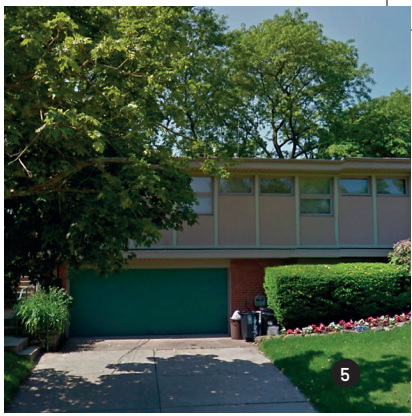
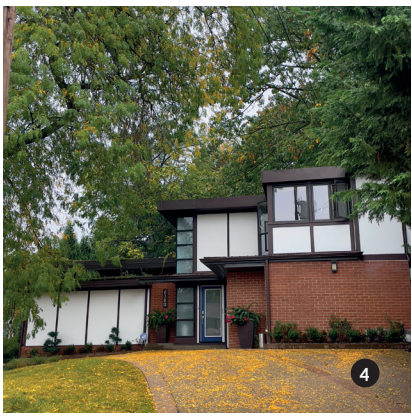
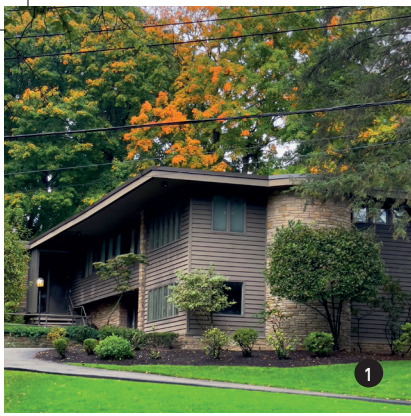
Lustron Homes



Lustron Homes were prefabricated models developed by industrial inventor Carl Strandlund [who had experience designing gas stations] in response to the shortage of houses following WWII. Consisting of durable enamel coated steel panels, three main models all under 1,150 square-feet were offered to buyers, with options and variations. Of the over 2,000 constructed between 1948-1950, approximately 1500 Lustron homes are still in existence across the United States with several listed on the National Register of Historic Places.



Two residences at 6603 and 6605 Forward Ave were originally built as Lustron Homes by 1950. Although the enamel-coated steel square panel facades are now covered with white brick or beige vinyl siding, a few signature design features can still be spotted, such as the zig-zag downspout trellis at the front corner supporting the open porch, distinctive window types, or the roofing - porcelain-enameled steel tiles installed shingle-style. 6605 is available to rent for overnight stays and has been updated with a Japanese garden.



SCAN TO ACCESS MAP!

Remember these are private residences, please be respectful when passing by

- 1 1714 Beechwood Blvd
Herb Seigle, Architect
1958
- 2 6669 Forest Glen Rd
1950
- 3 2401-2412 Beechwood Blvd
Tasso Katselas, Architect
1978
- 4 6380 Caton St (Weinberger House)
Peter Berndtson & Cornelia Brierly, Architects*
1948
- 5 6632 Rosemoor St
1954
- 6 3028-2972 Beechwood Blvd
1950
- 7 209 Anita Ave
1953
- 8 2805 Fernwald Rd
1950
- 9 2749 Mt Royal Rd
Dahlen Ritchey, Architect
1947
- 10 2717 Mt Royal Rd (Landis House)
Peter Berndtson & Cornelia Brierly, Architects*
1947
- 11 2534 Mt Royal Rd
1957
- 12 2528 Mt Royal Rd
1960
- 13 2521 Mt Royal Rd
1965
- 14 2483 Mt Royal Rd
1960
- 15 6603 and 6605 Forward Ave
Modified prefabricated Lustron homes
1950
- 16 6627 Forward Ave
1961
- 17 1219 Commercial St
John Kudravy, Architect
1978
- 18 1158 Windermere Dr
John Kudravy, Architect
1960
- 19 1150 Windermere Dr
Tasso Katselas, Architect
1963
- 20 1137 Onondago St (Lipkind House)
Peter Berndtson & Cornelia Brierly, Architects*
1954

*Pittsburgh History & Landmarks Foundation designated historic landmark

All photographs by Brittany Reilly, 2023, except where noted. For questions, information & suggestions: info@pittsburghmoderncommittee.org

