

Mount Washington

Duquesne Heights and Allentown

20th-century Modern
Architecture, Public Art & Design
Pittsburgh, Pennsylvania

MODERN SURVEY SERIES
www.pittsburghmoderncommittee.org



PITTSBURGH
MODERN
COMMITTEE
OF
PRESERVATION
PITTSBURGH



Architecture



Part of the historical transformation of coal hill into a signature Pittsburgh experience, the Modern and Postmodern style homes, condo buildings, commercial and public spaces atop Mount Washington and adjacent neighborhoods are often responding to the distinctive terrain and its relationship to Point State Park and the composition of the Golden Triangle - itself an outcome of the mid-20th century metamorphosis of Pittsburgh.

Public Experience



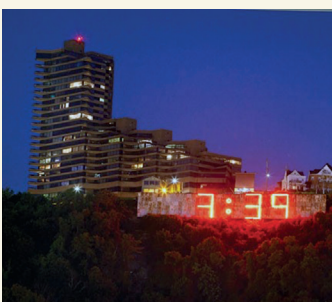
Envisioned and designed by Griswold, Winters & Swain, Landscape Architects, a master plan developed in the late 1950s led to the implementation of beloved public amenities along Grandview Avenue - featuring three circular Overlook structures and various vista opportunities. *"What one sees everyday is part of his City...whatever we do to our hillsides establishes the visual character of our City and affects the quality of our environment"* - from the Architect's study for the Dept. of Parks and Recreation, 1970.

Design

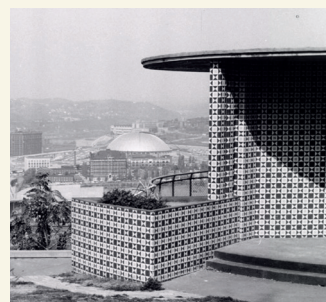


Delightful tile details remain intact on a modernist school design, contemporary murals dot facades amongst small & local businesses, a family-owned florist remains in business in their colorful 1951 storefront ... in our City of Neighborhoods, the residential streets and commercial avenues of Mount Washington/Duq. Heights and Allentown have maintained a charming main-street scale, offer a mix of earlier styles alongside modern, and thrive as home to classics and newcomers alike.

Moved or Modified

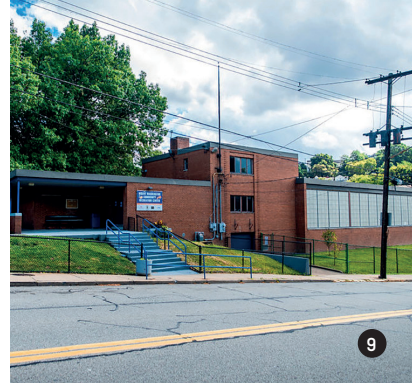
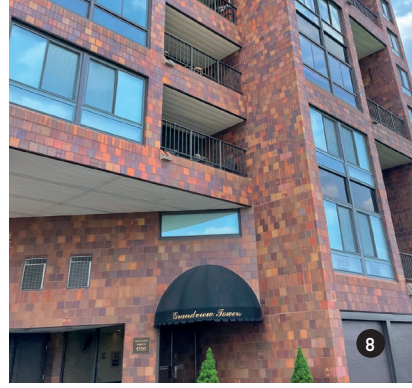
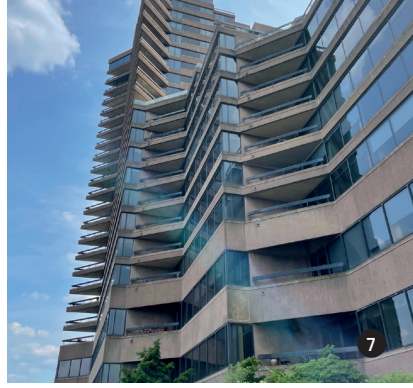
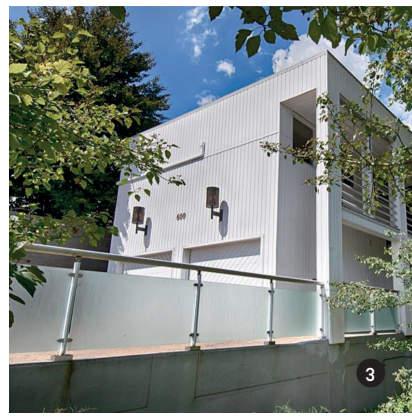
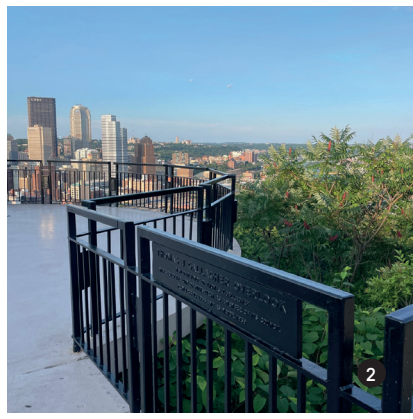
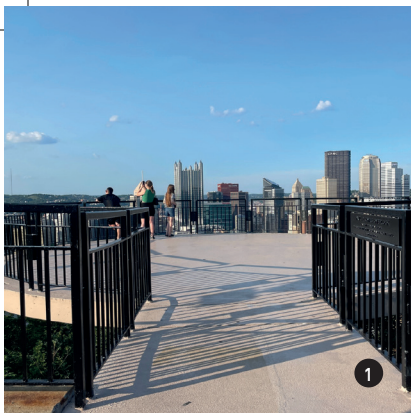


What is currently an Iron City Beer banner stretching across the hillside as you gaze upward from the three rivers, dates back to 1938 when the company installed a 650-foot long neon sign with 30-foot tall letters advertising their product. In 1940 an upgrade incorporated animated pint glasses and a digital clock. From the mid-1950s brands including Cott Beverages, WTAE, Bayer, and Sprint utilized the prime space. ALCOA's usage between 1967-1992 featured a grey & white grid pattern spelling out "Pittsburgh."



The tile-clad concrete Grandview Park Overlook/Bandshell was constructed in 1958 at 1255 feet above sea level, amongst the highest points in Pittsburgh, with a view of the City and Monongahela River. Still in place today but unfortunately painted black - with the original tile in a bold modern pattern peeking through.

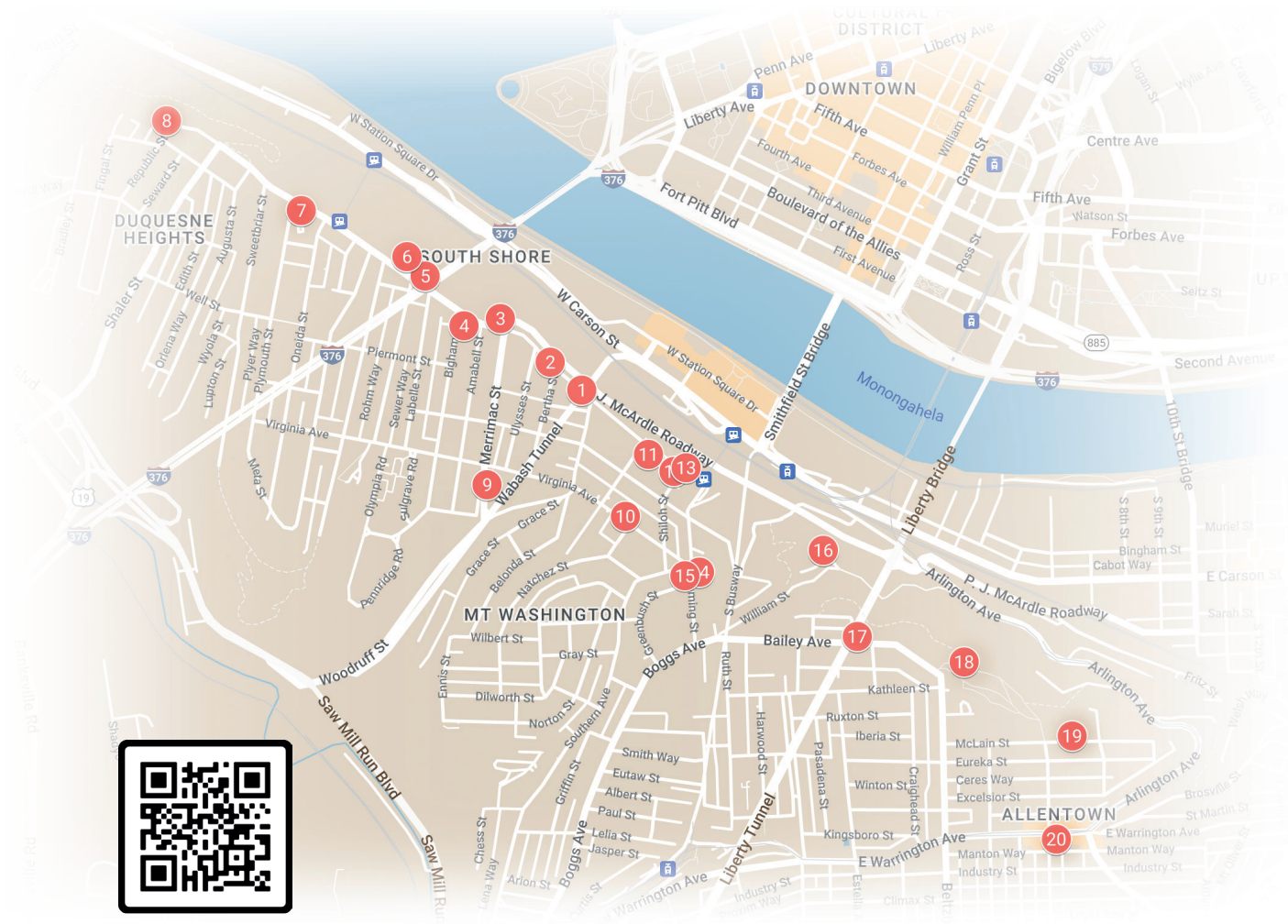
Image: Allegheny Conference on Community Development Photographs, Heinz History Center



- 1 Paul F. Jones Overlook**
Griswold, Winters & Swain, Landscape Architects
1966-67
- 2 Thomas J. Gallagher Overlook**
Griswold, Winters & Swain, Landscape Architects
1966-67
- 3 Private Residence**
1974
600 Grandview Avenue
- 4 Former Saint Mary of the Mount School Hall**
1960s
115 Bingham Street

- 5 Private Residence**
Dev Nagar, Architect
1992
910 Grandview Avenue
- 6 1000 Grandview Avenue Condos**
Edgar A. Kwalwasser, Architect
1976
1000 Grandview Avenue
- 7 Trimont Plaza / Trimont Condominiums**
L. D. Astorino & Associates
1984
1301 Grandview Avenue
- 8 Grandview Towers**
1986
1700 Grandview Avenue

- 9 Ream Recreation Center, Swimming Pool & Parklet**
1950s
321 Merrimac Street
- 10 Wallace Florist**
Theodore (Ted) Wallace, Owner, Designer
1951
138 Virginia Avenue
- 11 Private Residence**
1980
133 Grandview Avenue
- 12 Plaza at Grandview**
1980
111 Grandview Avenue
- 13 Patrick T. Fagan Overlook**
Griswold, Winters & Swain, Landscape Architects
1966-67
- 14 Former Headquarters, German Savings & Loan Bank**
IKM Architects
1970s
55 Wyoming Street
- 15 Private Residence**
1964
300 Wyoming Street
- 16 Private Residence**
Dunn and Associates, Inc., Alan Dunn, Architect
1996
302 Cola Street
- 17 Private Residence**
1958
355 Bailey Avenue
- 18 Grandview Park Bandstand at Emerald View Park**
Grove, Schafer & Associates
1958
664 Science St
- 19 Grandview Elementary / Grandview PreK-5**
Press C. Dowler and William Dowler, Architects
1962
845 McLain Street
- 20 Former Hilltop Theater**
Alla Famiglia restaurant
1940s - Updated
804 E Warrington Ave



Click/Scan to Access Map!

